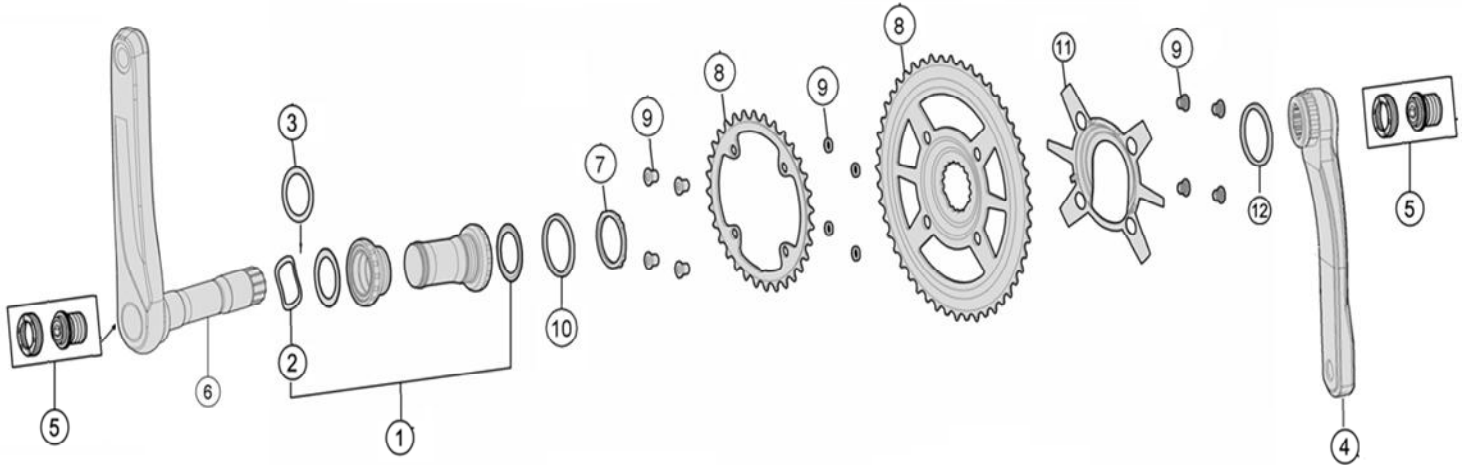


Fits 10, 11 speed systems; C.L. 47mm; Q-Factor : 154mm

2025 BS p67



Item No.	FSA Code No.	Description	Notes
1	200-1869	BB-6200 Road MegaExo Bottom Bracket – $\phi$ 24mm	68mm width BSC-1.37"x24T★
2	230-0034000141	MW454 Wave Spring Washer	
3	390-0046000840	MS318 Adjustable Spacer	Adjusting spindle to bb width variation
4	341-0105005090	K2726 Gossamer Alloy Right Arm w/QR-31	175L ★
5	390-0121000010	QR-31 Self-Extracting Crank Bolt Assembly	
6	340-0125005090	K1726 Gossamer Alloy Left Arm w/Spindle $\phi$ 24mm	175L ★
7	390-0044000600	ML549 Modular Crank System Lockring	
8	370-0143004050	WA741 Stamped Chainring Direct Mount 48T	48/32 N11 (ST)★
	370-0051001140	WB050 Stamped Chainring (BCD 90mm) 32T	
9	390-0125000150	ML080+ML163 + MW058K Chainring bolts kit	
10	230-4034	MW112 Spacer 2.5 mm	
11	380-0472000110	W1158 Decorative Spider	
12	230-0026000600	MW489 Spacer 3mm	

### ★ Optional Parts

Item No.	FSA Code No.	Description	Notes
4	341-0105004090	K2726 Gossamer Alloy Right Arm	172.5L
	341-0105003090		170L
	341-0105002090		165L
6	340-0125004090	K1726 Gossamer Alloy Left Arm w/Spindle $\phi$ 24mm	172.5L
	340-0125003090		170L
	340-0125002090		165L
8a	370-0142003051	WA740 Stamped Chainring Direct Mount 46T	46/30 N11 (ST)
	370-0050021140	WB025 Stamped Chainring (BCD 90mm) 30T	
8b	370-0143004050	WA741 Stamped Chainring Direct Mount 48T	48/32 N11 (SS)
	370-0041001050	WB412 Stamped Chainring (BCD 90mm) 32T	
8c	370-0142003051	WA740 Stamped Chainring Direct Mount 46T	46/30 N11 (SS)
	370-0042021050	WB007 Stamped Chainring (BCD 90mm) 30T	

★ For other BB compatibility, visit <http://www.fullspeedahead.com/support/technical-information-instructions/>