

# E-bike Chainguard Installation Instructions

Published – Jul, 2016. ZSP016.v3 © Full Speed Ahead



## Introduction

Congratulations on your Full Speed Ahead product. Please read these instructions and follow them for correct use. Failure to follow the warnings and instructions could result in damage to product not covered under warranty, damage to bicycle; or cause an accident resulting in injury or death. Since specific tools and experience are necessary for proper installation, it is recommended that the product be installed by a qualified bicycle technician. FSA & Vision assumes no responsibility for damages or injury related to improperly installed components.

## Warranty

Full Speed Ahead (FSA) warrants all FSA, Vision, Metropolis and RPM products to be free from defects in materials or workmanship for a period of two years after original purchase unless otherwise stated in the full warranty policy. The warranty is non-transferable and valid to the original purchaser of the product only. Any attempt to modify the product in any way such as drilling, grinding, and painting will void the warranty. For more information on warranty policy and instructions for completing a warranty claim, check out the Full Warranty Policy found at our website: <http://www.fullspeedahead.com/techdoc>

## Specification

Item Number / Model Name	E-Bike Left crank CK-745/IS, CK-632/IS, CK-310/IS, AL-8/IS, CK-720/IS
Item Number / Model Name	Chainguard W1121 (for 18T · 19T · 20T), W1122 (for 15T · 16T · 17T), W1125 (for 15T · 16T · 17T), W1126 (for 18T · 19T · 20T), W1002 (for 15T · 16T · 17T), W1129, <b>W1133 (for 15T)</b>



### Chainguard Installation:

1. Crank
2. Chainguard
3. MW549 Spacer

\* Before installation, ensure that chainring and chainguard are compatible — see above specification. It is not recommend to repeat install and disassembly chainguard.



### Identify the crank

Check the crank for necessary  $\varnothing$  3.1mm alignment hole near the spindle insert.

\* Not all ISIS crank is compatible to the chainguard.



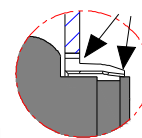
1. Place the chainguard on the crank and ensure the chainguard's alignment pin and crank's alignment hole fit together during assembly.

\* If the chainguard is not aligned correctly, it will result in poor installation and fit. The chainguard is wedged it'self well to the crank see detailed illustration as below.



2. Press the chainguard to fit to the crankspindle insert.

\* Ensure the chainguard wedge in the crank.



\* Press the chainguard as the arrow in the illustration.



à

à

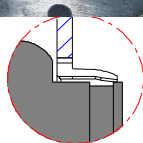


3. Ensure the chainguard is securely snapped on to the crank.

\* If the chainguard is not snapped on to the crank it may fall off while riding.

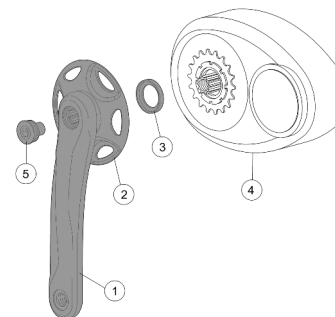


The chainguard is wedged it'self well to the crank see detailed illustration as below.



à

à

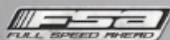


4. Place the MW549 Spacer ③ onto motor axle ④ with smooth side facing the motor and the recessed side facing outwards. Install crank ① and chainguard ② on to axle and tighten crank bolt ⑤ to 400-600 kgf.cm / 40-60 N.m / 355-530 in.lbs.

### CAUTION

The MW549 Spacer ③ is for adjusting clearance between chainguard and chain or chainguard is mounted too loose on crank ①.

The Spacer is not required when the clearance between chainguard and chain is correct, or the chainguard is securely snapped on to the crank.



## Contact

If you have questions, please visit our web site technical section: <http://www.fullspeedahead.com/contact> or contact:

Full Speed Ahead, USA  
12212 Cyrus Way Mukilteo, WA 98275-5702  
Tel: 1\_425\_488\_8653 Fax: 1\_425\_489\_1082

Full Speed Ahead, Europe  
Via Del Lavoro, 56 20874 Busnago, Milan, Italy  
Tel: +39\_039\_688\_5265 Fax: +39\_039\_682\_3336

TH INDUSTRIES / FSA Asia  
NO.6, Wu-gong 8th Rd., Wufeng Dist., Taichung City 41353, Taiwan (R.O.C.)  
Tel: +886\_4\_2331\_9134 Fax: +886\_4\_2331\_9314

