

NS SIC Integrated Handlebar Installation Instructions

Published –Mar, 2025 ZS240.v0 © Full Speed Ahead

Introduction

Congratulations on your Full Speed Ahead product. Please read these instructions and follow them for correct use. Failure to follow the warnings and instructions could result in damage to product not covered under warranty, damage to bicycle; or cause an accident resulting in injury or death. Since specific tools and experience are necessary for proper installation, it is recommended that the product be installed by a qualified bicycle technician. FSA & Vision assumes no responsibility for damages or injury related to improperly installed components.

Warranty

Full Speed Ahead (FSA) warrants all FSA and Vision products to be free from defects in materials or workmanship for a period of two years after original purchase unless otherwise stated in the full warranty policy. The warranty is non-transferable and valid to the original purchaser of the product only. Any attempt to modify the product in any way such as drilling, grinding, and painting will void the warranty. For more information on warranty policy and instructions for completing a warranty claim, check out the Full Warranty Policy found at our website: <https://www.fullspeedahead.com/en/support/warranty-policy>

Specification

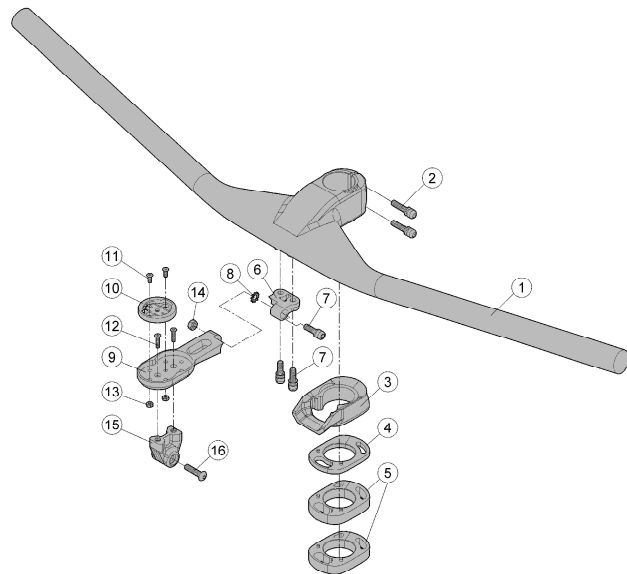
Model Name NS SIC Integrated Handlebar

Components

Follow the assembly order in the illustration:

- | | | |
|-------------------------|--|---|
| ① Handlebar body | ⑥ SIC Integrated Light / GoPro Mount- adaptor x1 | ⑪ Base fixing bolt M3x8L x2 |
| ② Fixing Bolt M5x22L x2 | ⑦ Fixing Bolts x3 (M5x16L x2, M5x18L x1) | ⑫ Go Pro Adaptor fixing bolt M3x12L x2 |
| ③ SIC spacer x1 | ⑧ Serrated washer x1 | ⑬ Base Nut x2 |
| ④ 5mm Spacer x1 | ⑨ SIC Integrated Light/GoPro Mount-Computer mount x1 | ⑭ SIC Integrated Light/GoPro Mount-Nut x1 |
| ⑤ 10mm Spacer x2 | ⑩ Computer mount base x1 | ⑮ Go Pro adaptor x1 |
| | | ⑯ Go Pro Fixing bolt M5x20L x1 |

NOTICE Components ⑥ ~ ⑯ includes for different spec accordingly.



Handlebar Installation

- Cut steerer tube according to manufacturer's instructions. Ensure there are no sharp burrs on the steerer tube. Select correct Spacers ④ , ⑤ for the desired height of the Handlebar.
- It is recommended to apply a light coat of carbon assembly paste (ME068). Slide Handlebar ① fully on to steerer tube. **⚠ WARNING** Do not use grease on carbon steerers. Only use carbon assembly paste (ME068).
NOTICE Brake/electronic wiring should be run through the Handlebar before installing Headset.
- Install the Headset following the manufacturer's instructions. Make sure there should be no play in the headset, but the bearings should not feel rough or bind.
- Ensure handlebar is aligned straight and Headset installation with proper bearing preload is achieved.
NOTICE Proper bearing preload is apparent when there is no " knock " (fore / aft or up / down free play) in the headset assembly, while the bearings rotate freely (free steering motion.).
- Gradually tighten the Fixing Bolts ② by alternating turning each bolts so both bolts tighten simultaneously to 51-61 kgf.cm / 5-6 Nm / 44-53 in.lbs. DO NOT exceed maximum torque specification. Always use a calibrated torque wrench.

SIC Integrated Light / GoPro Mount Installation

- Install Computer mount adaptor ⑥ and Serrated washer ⑧ to Computer mount ⑨ using Fixing Bolt ⑦ (M5x18L) and Nut ⑭ tighten to a torque not exceed 31 kgf.cm / 3 Nm / 27 in.lbs.
- Install Computer mount adaptor ⑥ to Handlebar body ① for the desired position by alternating tighten the fixing bolt ⑦ (M5x16L) to a torque not exceed 31 kgf.cm / 3 Nm / 27 in.lbs.
- Place Computer mount base ⑩ into the Computer mount for the desired position and tighten the Base fixing bolt ⑪ with Base Nut ⑬ to a torque of 20kgf.cm / 2Nm / 18 in.lbs. Do not exceed torque of 20kgf.cm / 2Nm / 18 in.lbs.
- Install GoPro Adapter ⑮ if GoPro Mount needed. Insert Fixing Bolt ⑫ through Computer Mount ⑨ to tighten with the GoPro Adapter ⑮ to torque 5kgf.cm / 0.5 Nm / 4.4 in.lbs. Do not tighten over torque 5kgf.cm / 0.5 Nm / 4.4 in.lbs.
- If install Go Pro or other products follow the manufacturer's instructions and use Go Pro Bolt ⑯. Do not tighten over torque 31 kgf.cm / 3 Nm / 27 in.lbs .

Contact

If you have questions, please visit our web site technical section: <https://www.fullspeedahead.com/en/support> or contact:

Full Speed Ahead, USA
12212 Cyrus Way Mukilteo, WA 98275-5702
Tel: 1_425_488_8653 Fax: 1_425_489_1082

Full Speed Ahead, Europe
Via Del Lavoro, 56 20874 Busnago, Milan, Italy
Tel: +39_039_688_5265 Fax: +39_039_682_3336

TH INDUSTRIES / FSA Asia
NO.6, Wu-gong 8th Rd., Wufeng Dist., Taichung City 41353, Taiwan (R.O.C.)
Tel: +886_4_2331_9134 Fax: +886_4_2331_9314

Notes: Specifications of product may be changed or improved for performance. Please refer to website periodically for technical updates and revised instructions. Printed in Taiwan.