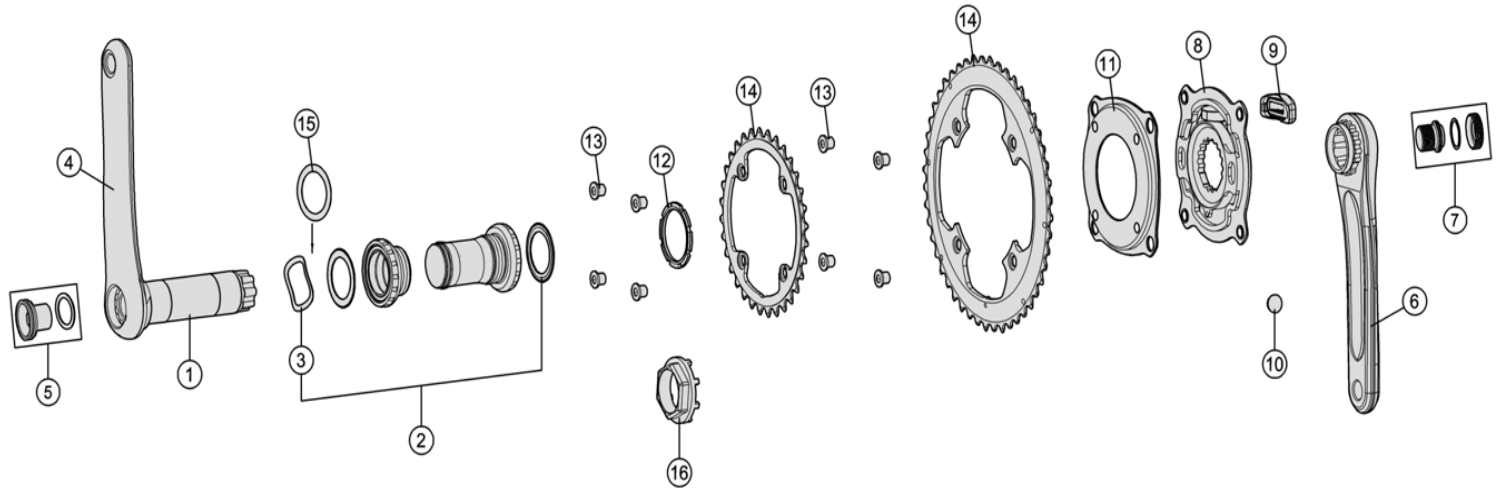


Convertible spider design; BCD-120/90mm



Item No.	FSA Code No.	Description	Notes
1	203-0008000060	A3160 ϕ 30mm Aluminum Spindle	
2	200-3201	BB-EVO8681 Road MegaEVO Bottom Bracket – ϕ 30mm	68mm width BSC-1.37"x24T★
3	230-5002	MW083 Wave Spring Washer	
4	340-0094005010	K1628 FSA Alloy Left Arm with Spindle	175L ★
5	390-0026000600	ML032+MW201 Crank Bolt for Left Arm	
6	341-0077005010	K2628 FSA Alloy Right Arm	175L ★
7	390-0027000600	QR-21 Self-Extracting Crank Bolt Assembly	
8	38000338000010	W0128 PowerBox Power Meter	
9	407-0013000110	E0660 Battery Cover	For Road PowerBox Power Meter
10	380-0294000000	E0672 Coin-style Lithium Renata CR2450N Battery	
11	380-0342000140	W0137 PowerBox Power Meter Adapter	
12	390-0044000600	ML549 Modular Crank System Lockring	
13	390-0070000150	ML550 Chainring Bolts	
14	370-0119004010	WA336 Full CNC Chainring (BCD 120mm) 48T	48/32 ★Optional parts
	370-0041001050	WB421 Full CNC Chainring (BCD 90mm) 32T	
15	230-4038	MS188 Adjustable Spacer	For adjusting spindle to bottom bracket width variation

★ Optional Parts

Item No.	FSA Code No.	Description	Notes
4	340-0094004010	K1628 FSA Alloy Left Arm with Spindle	172.5L
	340-0094003010		170L
6	341-0077004010	K2628 FSA Alloy Right Arm	172.5L
	341-0077003010		170L
14	370-0120003010	WA337 Full CNC Chainring (BCD 120mm) 46T	46/30
	370-0042021050	WB007 Full CNC Chainring (BCD 90mm) 30T	
16	230-0043000520	E0667 Power Meter Lockring Hexagon wrench tool	

★ For all other BB compatibility, visit <http://www.fullspeedahead.com/support/technical-information-instructions/>