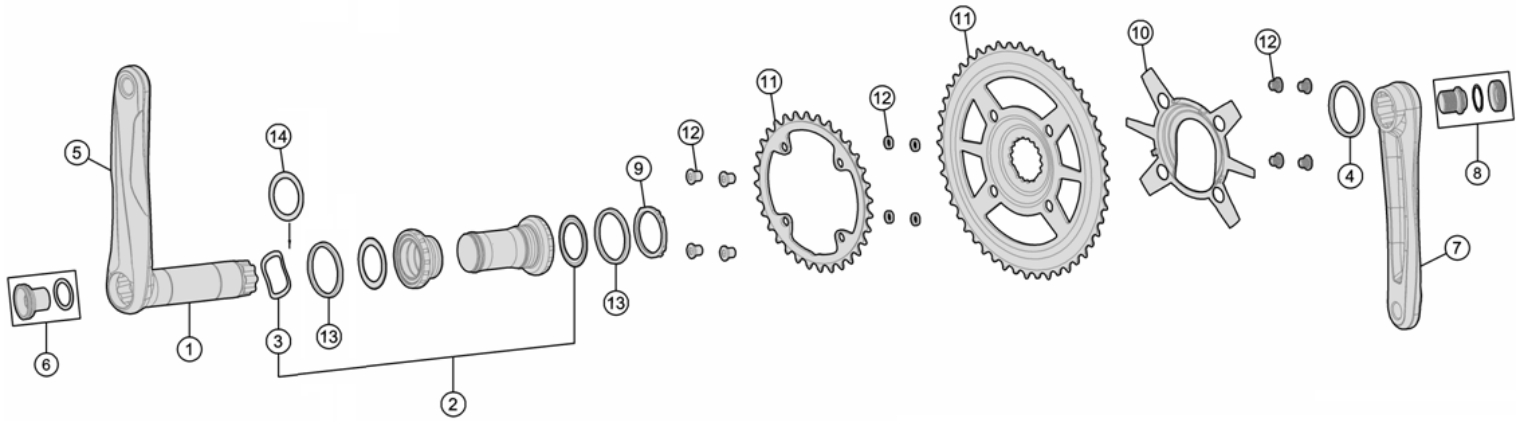


Gossamer Pro Modular Direct Mount 2X BB386EVO AGX⁺

CKM-OS6027SS/DM/86 CKM-OS6027ST/DM/86

AGX 2X Chainline - 47mm



| Item No. | FSA Code No. | Description | Notes |
|----------|----------------|--|---|
| 1 | 203-00200ASAE0 | A3183 ϕ 30mm Aluminum Spindle-123L | For AGX Modular BB30 Crankset |
| 2 | 200-3201 | BB-EVO8681 Road MegaEVO Bottom Bracket – ϕ 30mm | 68mm width BSC-1.37"x24T |
| 3 | 230-5002 | MW083 Wave Spring Washer | |
| 4 | 230-0026000600 | MW489 Spacer 3mm | |
| 5 | 340-0107005090 | K1659 Gossamer Alloy Left Arm with Spindle | 175L ★ |
| 6 | 390-0026000600 | ML032 Crank Bolt for Left Arm | |
| 7 | 341-0088005090 | K2659 Gossamer Alloy Right Arm | 175L ★ |
| 8 | 390-0027000600 | QR-21 Self-extracting Crank Bolt Assembly | |
| 9 | 390-0044000600 | ML549 Modular Crank System Lockring | |
| 10 | 380-0472000110 | W1158 Decorative Spider | |
| 11 | 370-0143004050 | WA741 Stamped Chainring Direct Mount 48T | 48/32 N11 (SS) ★ |
| | 370-0041001050 | WB412 Stamped Chainring (BCD 90mm) 32T | |
| 12 | 390-0069000150 | ML080+ML163 + MW058K Chainring bolts kit | |
| 13 | 230-0010000010 | MW114 Spacer 2.5 mm | |
| 14 | 230-4038 | MS188 Adjustable Spacer | For adjusting spindle to bottom bracket width variation |

★ Optional Parts

| Item No. | FSA Code No. | Description | Notes |
|----------|----------------|--|----------------|
| 5 | 340-0107004090 | K1659 Gossamer Alloy Left Arm with Spindle | 172.5L |
| | 340-0107003090 | | 170L |
| | 340-0107050090 | | 167.5L |
| | 340-0107002090 | | 165L |
| 7 | 341-0088004090 | K2659 Gossamer Alloy Right Arm | 172.5L |
| | 341-0088003090 | | 170L |
| | 341-0088050090 | | 167.5L |
| | 341-0088002090 | | 165L |
| 11 | 370-0142003050 | WA740 Stamped Chainring Direct Mount 46T | 46/30 N11 (SS) |
| | 370-0042021050 | WB007 Stamped Chainring (BCD 90mm) 30T | |
| 11 | 370-0143004050 | WA741 Stamped Chainring Direct Mount 48T | 48/32 N11 (ST) |
| | 370-0051001140 | WB050 Stamped Chainring (BCD 90mm) 32T | |
| 11 | 370-0142003050 | WA740 Stamped Chainring Direct Mount 46T | 46/30 N11 (ST) |
| | 370-0050021140 | WB025 Stamped Chainring (BCD 90mm) 30T | |