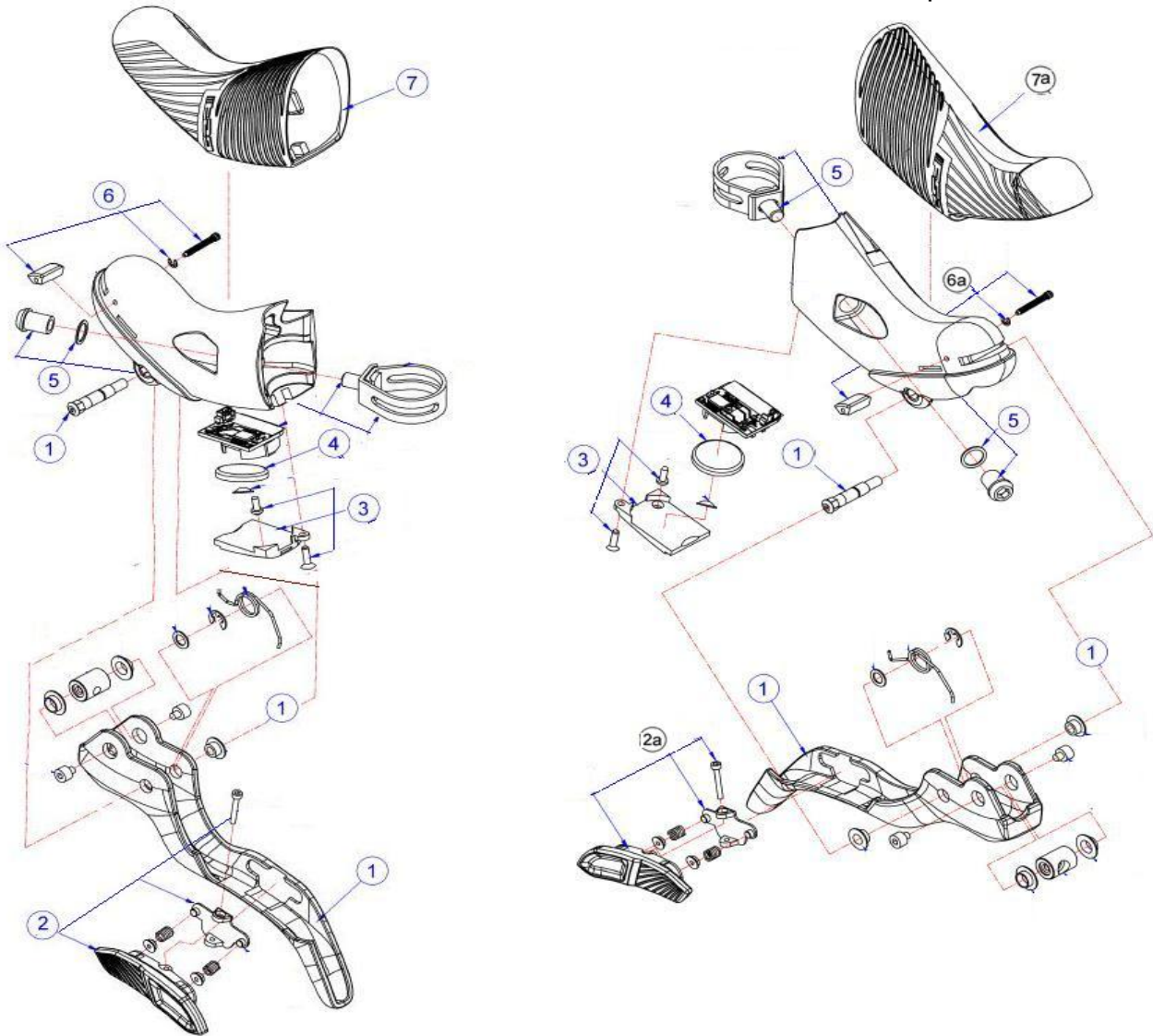


407-0004000030 SF009 K-FORCE WE SHIFTER+BR.LEVER-L standard size
 407-0004000031 SF009 K-FORCE WE SHIFTER+BR.LEVER-R standard size
 407-0005000030 SF010 K-FORCE WE SHIFTER+BR.LEVER-L compact size
 407-0005000030 SF010 K-FORCE WE SHIFTER+BR.LEVER-R compact size



| Item No. | FSA Code No. | Description | Notes |
|----------|----------------|---|-----------------------|
| 1 | 407-0061000110 | F2031 Shifter Lever-Left Standard size | For SF009-L |
| 2 | 407-0069000110 | E0624A Shifter Button -Left | For SF009-L & SF010-L |
| 3 | 407-0064000110 | F2023 Shifter Cover | |
| 4 | 407-0065000000 | F4028 Coin Cell Battery CR-2032 | |
| 5 | 407-0066000AH0 | F4021 Shifter Mount Clamp & Bolt | |
| 6 | 407-0067000110 | ML524A Reach Adjustment bolt kit - Left | SF009 -L SF010 -L |
| 7 | 407-0035000110 | F2021 Lever Hood -Left | SF009 -L SF010 -L |

★ Optional Parts

| Item No. | FSA Code No. | Description | Notes |
|----------|----------------|--|-------------------|
| 1a | 407-0060000110 | F2030 Shifter Lever-Right Standard size | For SF009 -R |
| 1b | 407-0062000110 | F2025B Shifter Lever-Left Compact size | For SF010 -L |
| 1c | 407-0063000110 | F2025A Shifter Lever-Right Compact size | For SF010 -R |
| 2a | 407-0070000110 | E0624B Shifter Button - Right | SF009-R SF010-R |
| 6a | 407-0068000110 | ML524B Reach Adjustment bolt kit - Right | SF009 -R SF010 -R |
| 7a | 407-0034000110 | F2022 Lever Hood -Right | SF009 -R SF010 -R |