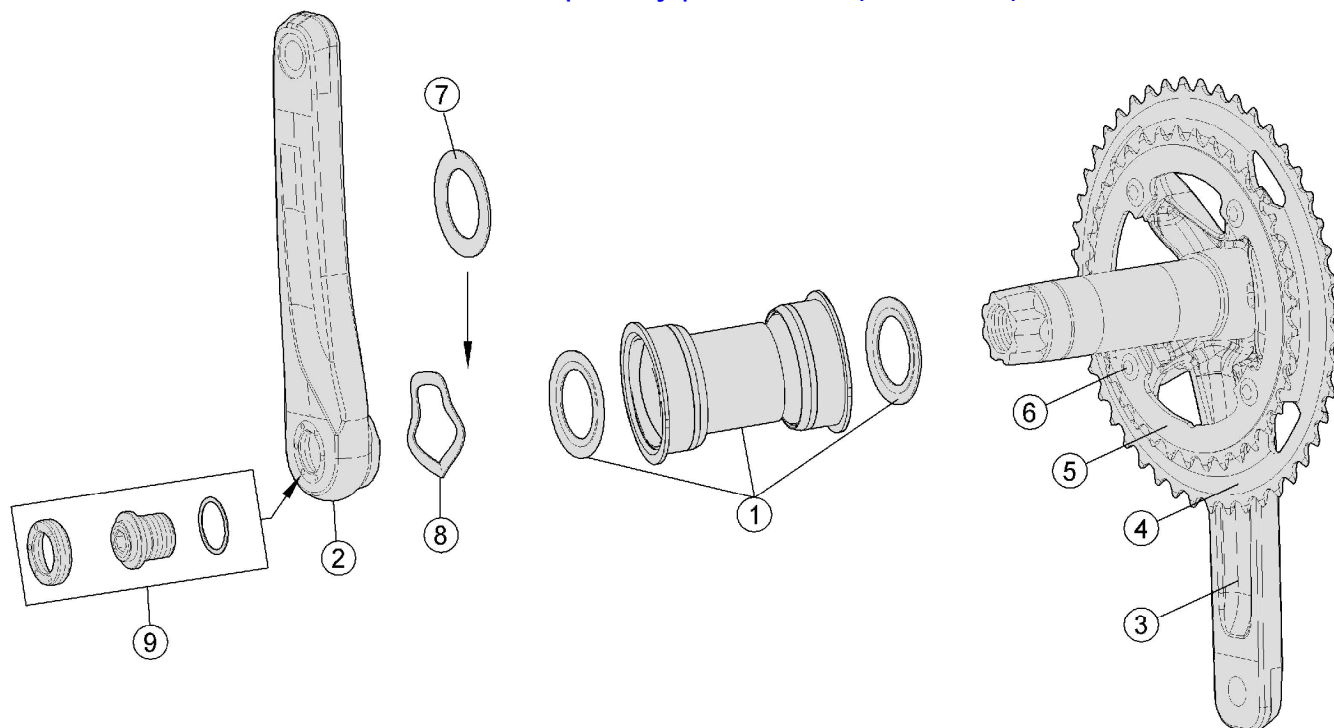


With BB-PF6000/CZ

For all other BB compatibility, please visit: <http://www.fullspeedahead.com/techdoc/>



Item No.	FSA Code No.	Description	Notes
1	200-3112	BB-PF6000/CZ/Di2 Road stainless BB-PF30	
2	340-0089005950	K1501 Gossamer Pro ABS BB386EVO Left Arm	175L ★
3	341-0071005950	K2501 Gossamer Pro ABS BB386EVO Right Arm/ Spindle	175L ★
4	371-0034005960	WA624 CNC Asymmetric Bolt Spacing Chainring (BCD 110mm) 50T	50/34 N10/N11 ★
5	371-0037002960	WB301 CNC Asymmetric Bolt Spacing Chainring (BCD 110mm) 34T	
6	390-0073000150	ML023 Chainring Bolts +MW426 5.5mm ABS Chainring Spacer	★
7	230-4038	MS188 Adjustable Spacer	For adjusting spindle to bottom bracket width variation
8	230-5002	MW083 Wave Spring Washer	
9	390-2074	QR-16 Self-Extracting Crank Bolt Assembly	

★Optional Parts

Item No.	FSA Code No.	Description	Notes
2	340-0089004950	K1501 Gossamer Pro ABS BB386EVO Left Arm	172.5L
	340-0089003950		170L
	340-0089002950		165L
	340-0089001950		160L
3	341-0071004950	K2501 Gossamer Pro ABS BB386EVO Right Arm/ Spindle	172.5L
	341-0071003950		170L
	341-0071002950		165L
	341-0071001950		160L
4	371-0033007960	WA626 CNC Asymmetric Bolt Spacing Chainring (BCD 110mm) 53T	53/39 N10/N11
5	371-0041005960	WB299 CNC Asymmetric Bolt Spacing Chainring (BCD 110mm)39T	
4	371-0031006960	WA625 CNC Asymmetric Bolt Spacing Chainring (BCD 110mm) 52T	52/36 N10/N11
5	371-0036003960	WB300 CNC Asymmetric Bolt Spacing Chainring (BCD 110mm)36T	
4	371-0035003960	WA623 CNC Asymmetric Bolt Spacing Chainring (BCD 110mm) 46T	46/36 N10/N11
5	371-0036003960	WB300 CNC Asymmetric Bolt Spacing Chainring (BCD 110mm) 36T	
4	371-0066004960	WA635 CNC Asymmetric Bolt Spacing Chainring (BCD 110mm) 48T	48/32 N10/N11
5	371-0067001960	WB394 CNC Asymmetric Bolt Spacing Chainring (BCD 110mm)-33T	
6	390-0074000150	ML023 Chainring Bolts + MW447 5.5mm Chainring Spacer	For 48/32 only

★N10/N11 –compatible with both Shimano DA-7900 10-speed (N10) and DA-9000 11-speed (N11) systems, and SRAM 10 & 11-speed systems.