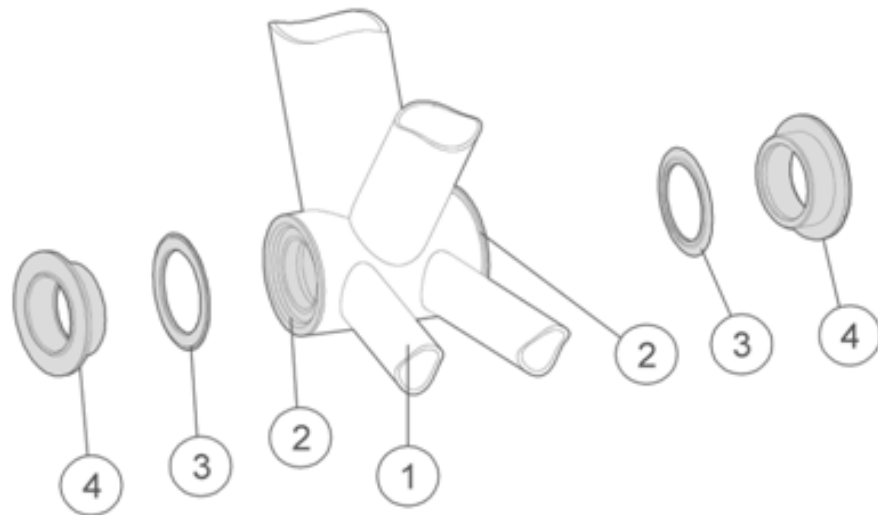


## BB30 / PF30 & 386EVO BB Reducer for MegaExo Road Alloy Cranksets Installation Instructions

Published – May, 2024. ZS071F.v2 © Full Speed Ahead



### Introduction

Congratulations on your Full Speed Ahead product. Please read these instructions and follow them for correct use. Failure to follow the warnings and instructions could result in damage to product not covered under warranty, damage to bicycle; or cause an accident resulting in injury or death. Since specific tools and experience are necessary for proper installation, it is recommended that the product be installed by a qualified bicycle technician. FSA & Vision assumes no responsibility for damages or injury related to improperly installed components.

### Warranty

Full Speed Ahead (FSA) warrants all FSA, Vision products to be free from defects in materials or workmanship for a period of two years after original purchase unless otherwise stated in the full warranty policy. The warranty is non-transferable and valid to the original purchaser of the product only. Any attempt to modify the product in any way such as drilling, grinding, and painting will void the warranty. For more information on warranty policy and instructions for completing a warranty claim, check out the Full Warranty Policy found at our website: <https://www.fullspeedahead.com/en/technology>

### Specification

Model Name / Item Number **EE084 BB386 EVO Reducer to Ø 24mm Spindle**  
 EE084 adapter is only to fit Alloy MegaExo Road crankset to 86.5mm wide 386EVO BB shells.

Model Name / Item Number **EE085 PF30 Reducer to Ø 24mm Spindle**  
 EE085 adapter is only to fit Alloy MegaExo Road Cranksets to 68mm wide BB30 and PF30 bottom bracket shells.

Application: Measure BB shell to verify the proper reducer to use

If BB Shell Width is	86.5mm	68mm
24mm Ø Reducer to use is	EE084 Ø 24 Reducer	EE085 Ø 24 Reducer

### Components

Follow the assembly order in the illustration:

- ① Bottom Bracket Shell
- ② PF30 or BB30 BB (Already pressed into BB shell)

- ③ Bearing Shield x2 (included with BB, not adapter)
- ④ EE084 Adapter x2 or EE085 Reducer x2

### Ø 24 Reducer Installation

1. Verify the BB shell is correct width and that correct reducer is being used (see chart under "Application")
2. The PF30 bottom bracket should already be installed in the frame (or BB30 bearings for BB30 frames). Consult PF30 BB installation instructions for installation, do not install the Ø 24 reducers in PF30 bottom bracket before the bottom bracket is installed in frame or damage can result.

**NOTICE** If the Bearings not aligned in BB Shell, Remove and reinstall bearings with proper tooling to guarantee bearing alignment. Otherwise the Crank rotation may be poor after being installed.

3. Apply a layer of grease on inside edge of the Bearing Shield to reduce friction when installed. Place the Bearing Shields ③ on the Bearing ②, with rubber face outside on each side of the BB.
4. Press the Ø 24 reducer ④ into the bearings of the bottom bracket. The reducers should fit snug but not inhibit the rotation of the bearing.

### Contact

If you have questions, please visit our web site technical section: <https://www.fullspeedahead.com/en/support> or contact:

Full Speed Ahead, USA  
 12212 Cyrus Way Mukilteo, WA 98275-5702  
 Tel: 1\_425\_488\_8653 Fax: 1\_425\_489\_1082

Full Speed Ahead, Europe  
 Via Del Lavoro, 56 20874 Busnago, Milan, Italy  
 Tel: +39\_039\_688\_5265 Fax: +39\_039\_682\_3336

TH INDUSTRIES / FSA Asia  
 NO.6, Wu-gong 8th Rd., Wufeng Dist., Taichung City 41353, Taiwan (R.O.C.)  
 Tel: +886\_4\_2331\_9134 Fax: +886\_4\_2331\_9314