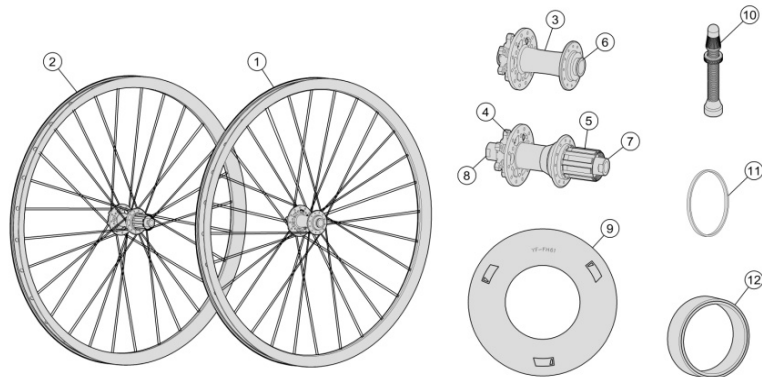




Gradient Wheelset Installation Instructions

Published – Feb, 2023. ZS232.v0 © Full Speed Ahead



Introduction

Way to go! This FSA Component is built to shred. Stick to these instructions and you'll be on the trail soon. Failure to follow the instructions and warnings could result in damage to product not covered under warranty, damage to bicycle; or cause an accident resulting in injury or death or being featured in Friday Fails. Since specific tools and experience are necessary for proper installation, it is recommended that the product be installed by a qualified bicycle Mechanic. FSA assumes no responsibility for damages or injury related to improperly installed components.

Warranty

Full Speed Ahead (FSA) warrants all FSA, Vision, products to be free from defects in materials or workmanship for a period of two years after original purchase unless otherwise stated in the full warranty policy. The warranty is non-transferable and valid to the original purchaser of the product only. Any attempt to modify the product in any way such as drilling, grinding, and painting will void the warranty. For more information on warranty policy and instructions for completing a warranty claim, check out the Full Warranty Policy found at our website: <https://www.fullspeedahead.com/en/technology>

Specification

Model Name : Gradient i30 Enduro Wheelset

Components

Follow the assembly order in the illustration:

① Front Wheel	⑤ Freehub Body	⑨ W1124 Spoke Protector
② Rear Wheel	⑥ MW831 Front Hub TA20 End Cap Set	⑩ E0723 Tubeless Valve x2
③ Front Hub	⑦ MW840 Rear Hub X12 End Cap-Right (Drive side)	⑪ MW322 cassette spacer
④ Rear Hub	⑧ MW832 Rear Hub X12 End Cap-Left (Non-drive side)	⑫ ME312 Tubeless Rim Tape

Installation

Note: Gradient Wheels include a tubeless conversion kit. For installation of tubeless system, see below instructions.

1. Ensure rim strip or Tubeless Rim Tape ⑫ and valve are installed.
2. Install tubes (if using) and clincher tires onto the front ① and rear wheels ② following the tire manufacturer's instructions.
3. Lightly grease the Freehub Body ⑤ and install cassette as instructed by cassette manufacturer. Wheels equipped with a Shimano Freehub Body are compatible with Shimano 11 speed, and other compatible cassettes. Use the supplied cassette spacer ⑪ with 9 or 10 speed systems.
4. Wheels equipped with a Shimano Microspline Freehub Body are compatible with Shimano 12 speed cassette
5. Wheels equipped with a SRAM Freehub Body are compatible with SRAM 11, 12 speed cassette.
6. Install disc brake rotor as instructed by manufacturer and tighten to manufacturer's recommended torque. **⚠ WARNING** Periodically check disc rotor screws for correct torque. Improper tightening or loose rotor screws can cause the rider to lose control of the bike and may result in injury or death.

For Through Axle Wheels: Install wheels into front or rear drop-outs following manufacturer's instructions. **⚠ WARNING** Check Through Axle for tightness before every ride.

Tubeless Rim Tape Installation

1. Using a small piece of abrasive pad or emery cloth, rotate the wheel for one full rotation while scrubbing the spoke bed cavity to remove any small burrs and any glaze on the anodized finish.
2. Using a clean rag and isopropyl alcohol, clean the spoke bed of any dirt or oil then wipe the rim cavity with a dry rag. Ensure there is no lint or foreign matter collected at the spoke holes.
3. To start the application of the tubeless rim tape ⑫, locate the decal on the rim or the weld joint of the rim. Start the end of the tape above the weld, between two of the spoke nipple holes. Center the tape in rim cavity and press to adhere. Hold the tape at the starting point with one hand and pull the tape as tightly as possible with the other hand. The tape will make some popping sounds but will not stretch and break. Alternately lay the tape on the spoke bed and press or burnish the tape firmly with your fingers.
4. Repeat the procedure in Step 3 until you have wrapped the rim two complete times.
5. Overlap the starting point by about 4 inches and cut the tape.
6. Rotate the wheel one full revolution, pressing firmly with your fingers on the tape to make sure it has conformed to the rim cavity. Ensure no wrinkles in the tape.
7. Locate the valve hole and using a small knife or razor blade, carefully cut open the valve hole with a small "x." Trim the radius of the hole.
8. Install the tubeless valve ⑩ in to valve hole and secure firmly using the valve adapter and valve nut.

Contact

If you have questions, please visit our web site technical section: <https://www.fullspeedahead.com/en/support> or contact:

Full Speed Ahead, USA
12212 Cyrus Way Mukilteo, WA 98275-5702
Tel: 1_425_488_8653 Fax: 1_425_489_1082

Full Speed Ahead, Europe
Via Del Lavoro, 56 20874 Busnago, Milan, Italy
Tel: +39_039_688_5265 Fax: +39_039_682_3336

TH INDUSTRIES / FSA Asia
NO.6, Wu-gong 8th Rd., Wufeng Dist., Taichung City 41353, Taiwan (R.O.C.)
Tel: +886_4_2331_9134 Fax: +886_4_2331_9314