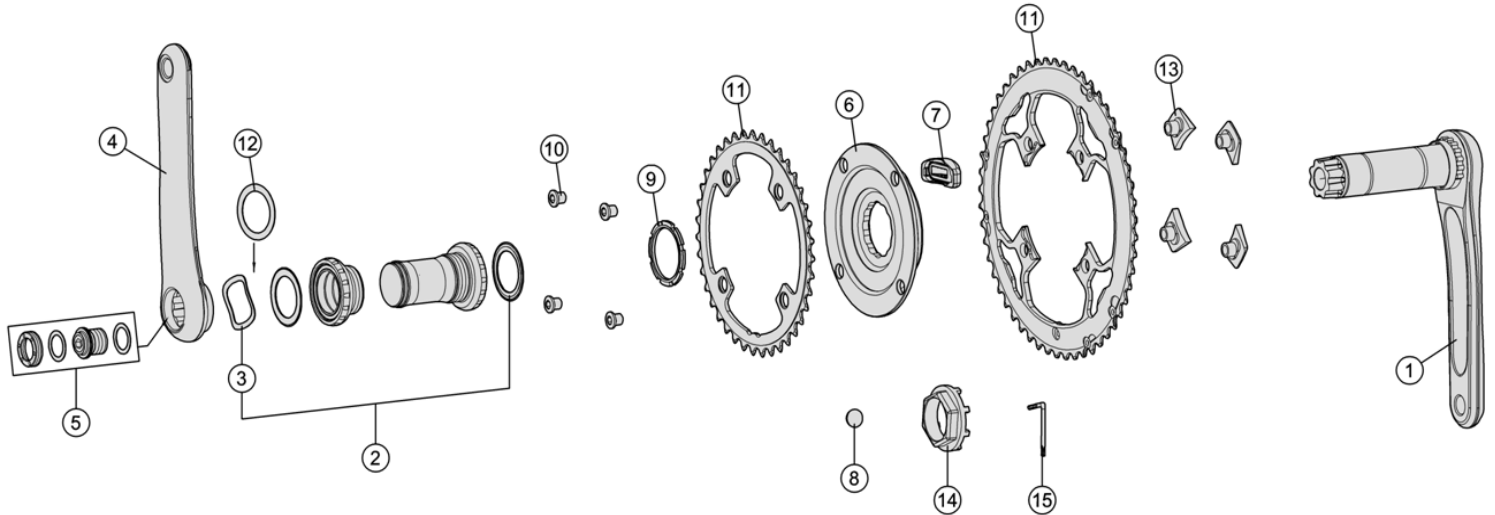


Convertible spider design for different chainring and chainline configurations



Item No.	FSA Code No.	Description	Notes
1	341-0060005010	K2480 Right Alloy Crank Arm with ϕ 30mm Aluminum Spindle	
2	200-3201	BB-EVO8681 Road MegaEVO Bottom Bracket – ϕ 30mm	68mm width BSC-1.37"x24T★
3	230-5002	MW083 Wave Spring Washer	
4	340-0076005010	K1444 Left Alloy Crank Arm	175L ★
5	390-2074	QR-16 Self-Extracting Crank Bolt Assembly	
6	380-0253000010	W0059 PowerBox Power Meter	
7	407-0013000110	E0660 Battery Cover	For Road PowerBox Power Meter
8	380-0294000000	E0672 Coin-style Lithium Renata CR2450N Battery	
9	390-0075000010	ML190 Power Meter Lockring	
10	390-0077000010	ML557 Chainring Bolts Kit	
11	371-0022007012 371-0011005051	WA001 Full CNC Asymmetric Bolt Spacing Chainring (BCD 110mm) 53T WB281 Full CNC Asymmetric Bolt Spacing Chainring (BCD 110mm) 39T	53/39 ★Optional parts
12	230-4038	MS188 Adjustable Spacer	For adjusting spindle to bottom bracket width variation
13	328-0007000260	E0099 PowerBox Power Meter Tab Cover	
15	390-1090	E0020 Torx Wrench - T30	

★ Optional Parts

Item No.	FSA Code No.	Description	Notes
4	341-0060004010	K2480 Right Alloy Crank Arm with ϕ 30mm Aluminum Spindle	172.5L
	341-0060003010		170L
6	340-0076004010	K1444 Left Alloy Crank Arm	172.5L
	340-0076003010		170L
11	371-0024006012	WA009 Full CNC Asymmetric Bolt Spacing Chainring (BCD 110mm) 52T	52/36
	371-0012003050	WB288 Full CNC Asymmetric Bolt Spacing Chainring (BCD 110mm) 36T	
11	371-0023005012	WA004 Full CNC Asymmetric Bolt Spacing Chainring (BCD 110mm) 50T	50/34
	371-0014002051	WB282 Full CNC Asymmetric Bolt Spacing Chainring (BCD 110mm) 34T	
14	230-0043000520	E0667 Power Meter Lockring Hexagon wrench tool	

★ For all other BB compatibility, visit <http://www.fullspeedahead.com/support/technical-information-instructions/>
http://fsa-4207.kxcdn.com/wp-content/uploads/2014/07/CRANKSET_BB-COMPATABILITY-CHART-ROAD-20160312.pdf